



Virginia Healthcare Workforce Briefs

Indicators from the Bureau of Labor Statistics'
Current Employment Statistics Survey
Series 1: State & National Employment

Series 1, Issue 88

July 2019

Inside this Brief:

Virginia HC&SA Employment	2
Virginia Employment	2
National Employment	3
State Employment Growth	3
About the Data	4

Data in the report are seasonally adjusted. Self-employed persons, including health professionals in private practice, are not included.

Highlights

- ◆ According to preliminary estimates, Virginia's Health Care & Social Assistance (HC&SA) sector created 500 new jobs in June. This gain represents a one-month annualized employment growth rate of 1.3%. During the first half of 2019, employment in Virginia's HC&SA sector increased by 7,400. This year-to-date increase represents 2.65% of all nationwide HC&SA job growth in 2019.
- ◆ For the second consecutive month, there was a decrease in Virginia's total nonfarm payroll. After declining by 2,600 in May, Virginia's total nonfarm payroll fell by an additional 1,200 in June. However, Virginia's total nonfarm payroll has still increased by 23,000 so far this year.
- ◆ One month after experiencing its weakest monthly employment gain in more than one year, the national HC&SA sector rebounded in June thanks to the creation of 50,500 new jobs. This gain represents a one-month annualized employment growth rate of 3.0%.
- ◆ Likewise, the nation's total nonfarm payroll rebounded strongly after increasing by only 72,000 in May. The nation's total nonfarm payroll increased by 224,000 in June, a gain that translates into a 1.8% annualized growth rate. This increase also represents its largest monthly gain since January.

Data in Brief

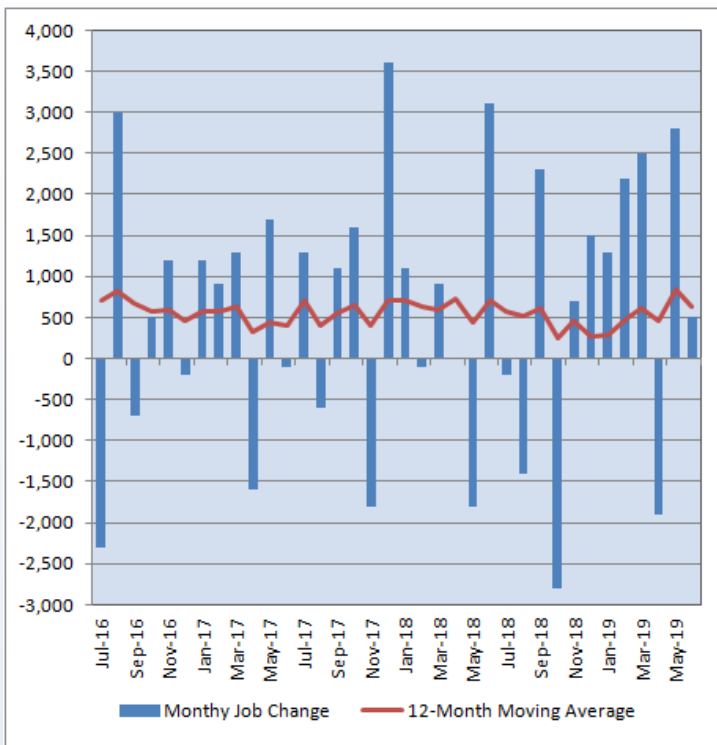
Seasonally Adjusted*	Employment, in Thousands				Growth Rate, Annualized		
	June 2018	Mar. 2019	May 2019	June 2019	12 Month	3 Month	1 Month
Nonfarm, Total							
Virginia	4,004.0	4,033.0	4,032.8	4,031.6	0.7%	-0.1%	-0.4%
National	149,007.0	150,796.0	151,084.0	151,308.0	1.5%	1.4%	1.8%
Health Care & Social Assistance							
Virginia	445.8	451.9	452.8	453.3	1.7%	1.2%	1.3%
National	19,906.7	20,310.9	20,394.7	20,445.2	2.7%	2.7%	3.0%
All Other Nonfarm							
Virginia	3,558.2	3,581.1	3,580.0	3,578.3	0.6%	-0.3%	-0.6%
National	129,100.3	130,485.1	130,689.3	130,862.8	1.4%	1.2%	1.6%

Preliminary estimates are italicized

*Seasonally adjusted data are adjusted by the Bureau of Labor Statistics to account for weather, holidays and other seasonal changes. Economists use seasonally adjusted data to reveal underlying trends over time. This series uses seasonally adjusted data exclusively. When comparing data in this series to other HWDC series, or publications from other sources, it is important to note whether the data reported have been seasonally adjusted.

Virginia HC&SA Employment

Figure 1: Monthly Change in Employment in Virginia’s Health Care & Social Assistance Sector, Seasonally Adjusted.



According to preliminary data released on Friday, July 19, 2019, by the U.S. Department of Labor, Bureau of Labor Statistics, Virginia’s Health Care & Social Assistance (HC&SA) sector enjoyed a relatively modest employment gain in June thanks to the creation of 500 new jobs during the month. This gain translates into a 1.3% annualized employment growth rate. With this job gain, Virginia’s HC&SA sector has increased employment in five of the first six months of 2019. Regardless, this month’s employment gain is below the long-term statewide HC&SA average. Over the past year, Virginia’s HC&SA sector has created an average of 625 jobs per month. This average translates into a 12-month employment growth rate of 1.7%.

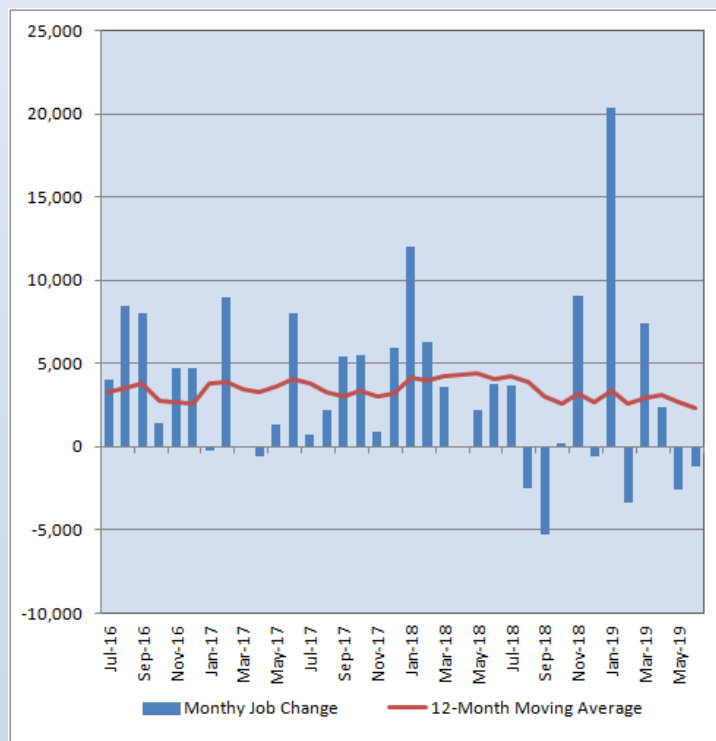
During the first half of 2019, employment in Virginia’s HC&SA sector increased by 7,400. This represents a significant improvement relative to the previous year. In the first six months of 2018, statewide HC&SA employment increased by only 3,200. In fact, Virginia’s HC&SA sector has already created more jobs so far this year than in all of 2018. Throughout all of 2018, Virginia’s HC&SA sector created 3,300 jobs.

Virginia Employment

For the second consecutive month, employment growth in Virginia’s HC&SA sector failed to lead to an increase in the state’s total nonfarm payroll. In June, Virginia’s total nonfarm payroll fell by 1,200. This decline represents a one-month annualized growth rate of -0.4%. In fact, Virginia’s total nonfarm payroll experienced negative growth in Q2 2019. Over the previous three months, the state’s total nonfarm payroll fell by 1,400. This employment loss translates into a -0.1% annualized growth rate. Given this employment weakness over the past several months, the 12-month moving average of the change in Virginia’s total nonfarm payroll fell to its lowest value in more than five years. Over the past year, Virginia’s total nonfarm payroll has increased by an average of 2,300 per month.

Despite this recent lack of growth, however, Virginia’s total nonfarm payroll has still increased by 23,000 during the first half of 2019. In addition, Virginia’s total nonfarm payroll has experienced a modest long-term growth rate of 0.7% over the past year. However, this 12-month growth rate in Virginia’s total nonfarm payroll is only half of the comparable 1.5% nationwide average.

Figure 2: Monthly Change in Employment in Virginia’s Total Nonfarm Payroll, Seasonally Adjusted.

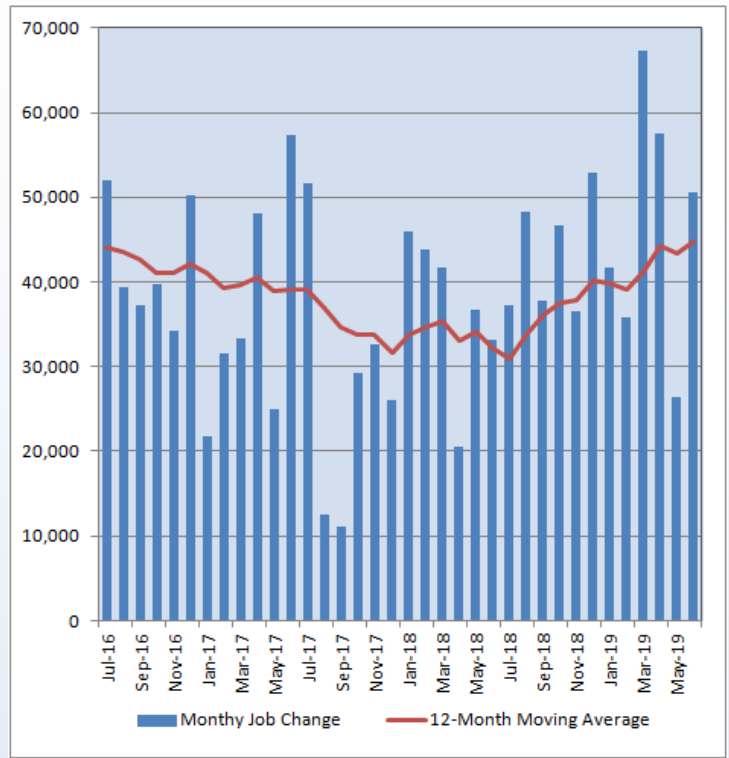


National Employment

In June, the national HC&SA sector created 50,500 new jobs, a gain that represents a one-month annualized employment growth rate of 3.0%. In addition, this month's result represents a significant improvement relative to May when national HC&SA employment increased by only 26,300. June's employment growth led to an increase in the 12-month moving average of the change in national HC&SA employment to its highest value in more than three years. With this increase, the national HC&SA sector has created an average of 44,875 jobs per month over the past year. This gain translates into a 2.7% employment growth rate.

There was a similar rebound in the growth of the nation's total nonfarm payroll during the month. After increasing by only 72,000 in May, the nation's total nonfarm payroll increased by 224,000 in June. This gain represents a one-month annualized employment growth rate of 1.8%. In addition, this result also represents the largest monthly gain in the nation's total nonfarm payroll since January. So far this year, the nation's total nonfarm payroll has increased by 1.03 million. At the same point in 2018, the nation's total nonfarm payroll had already increased by 1.41 million.

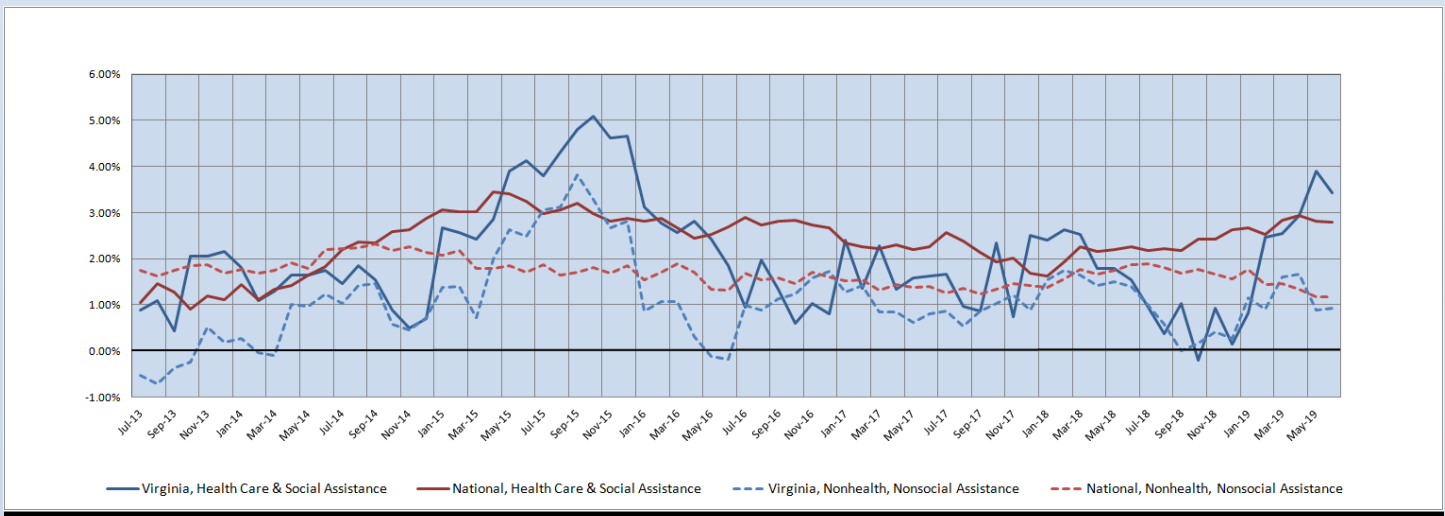
Figure 3: Monthly Change in Employment in National Health Care & Social Assistance Sector, Seasonally Adjusted



State Employment Growth

For the first time this year, Virginia's HC&SA sector experienced a decline in its six-month employment growth rate moving average. In June, this moving average fell from 3.90% to 3.44%. At this current level, however, it still remains higher than at any point in 2018. This growth rate also continues to exceed the comparable six-month employment growth rate moving average for the national HC&SA sector as a whole, which fell slightly from 2.82% to 2.79% in June. As for Virginia's total nonfarm payroll, its six-month employment growth rate moving average experienced a modest increase from 0.90% to 0.92% in June. However, it continues to lag behind the six-month moving average of the growth rate in the nation's total nonfarm payroll, which remained unchanged at 1.17% in June.

Figure 4: Six-Month Moving Average, Employment Growth, Seasonally Adjusted



Healthcare Workforce
Data Center

Perimeter Center
9960 Mayland Drive, Suite 300
Henrico, VA 23233-1463

Phone: (804) 367-2115
Fax: (804) 527-4434
E-mail: hwdc@dhp.virginia.gov

www.dhp.virginia.gov/hwdc/

HWDC Staff:

Elizabeth Carter, PhD <i>Executive Director</i>	Yetty Shobo, PhD <i>Deputy Director</i>
Laura Jackson, MSHSA <i>Operations Manager</i>	Rajana Siva, MBA <i>Research Analyst</i>
Christopher Coyle <i>Research Assistant</i>	

The Department of Health Professions Healthcare Workforce Data Center works to improve the data collection and measurement of Virginia's healthcare workforce through regular assessment of workforce supply and demand issues among the 80 professions and 350,000 practitioners licensed in Virginia by DHP.

The HWDC collects data on Virginia's licensed health professionals through surveys completed during the online license renewal and application process. Survey results and data may be accessed on our website: www.dhp.virginia.gov/hwdc/.

The HWDC also provides a series of Virginia Healthcare Workforce Briefs based on data collected by the US Department of Labor's Bureau of Labor Statistics and the US Department of Commerce' Bureau of Economic Analysis.

Virginia Healthcare Workforce Briefs:

Series 1: State & National Employment (Monthly)

Series 2: Virginia Regional Employment (Monthly)

Series 3: Income & Compensation (Quarterly)

Follow us on. . .

Tumblr: <http://vahwdc.tumblr.com/>

About the Data

Data in this report are from the US Department of Labor, Bureau of Labor Statistics' Current Employment Statistics program. The CES program surveys about 143,000 businesses and government agencies monthly. Unless otherwise noted, this series uses seasonally-adjusted data that removes seasonal variations related to weather, holidays, weekends, seasons and other predictable variations. This allows us to better examine underlying trends in the labor market. Data from recent months are preliminary and subject to revision in future releases from the CES. Revisions will be reported in future editions of this series. Unless otherwise noted, the CES data presented in this series:

Includes:

- ◆ Data on employed individuals drawing a paycheck (payroll employees).
- ◆ All employees, regardless of role, occupation or hours worked.
- ◆ HC&SA employees in the private sector only.
- ◆ Persons employed by health professionals in private practice.
- ◆ Both government and private sector workers in nonfarm employment data.

Does not include:

- ◆ Self-employed workers or volunteers, including health professionals in private practice.
- ◆ HC&SA employees in the public sector. (These are counted as government workers in monthly reports).
- ◆ Information on hours worked or the quality of employment.
- ◆ Government workers in HC&SA level data. (Government workers, regardless of occupation and